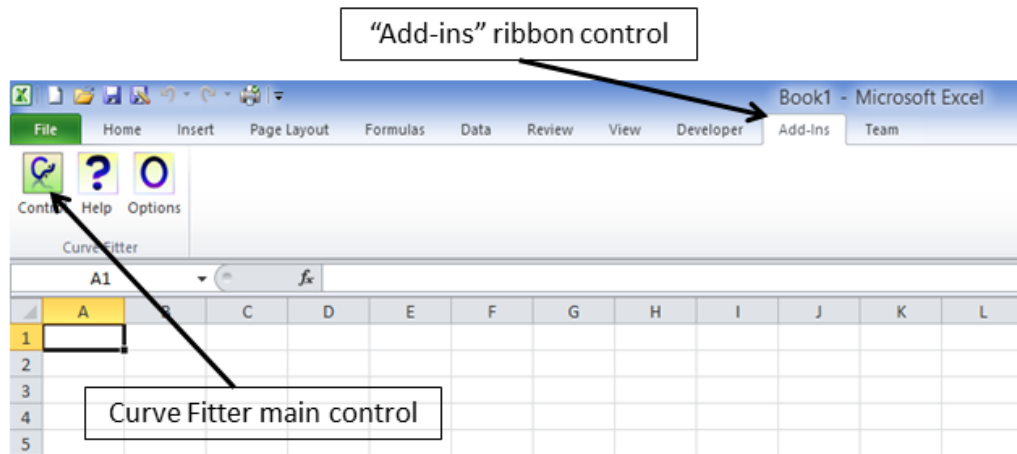


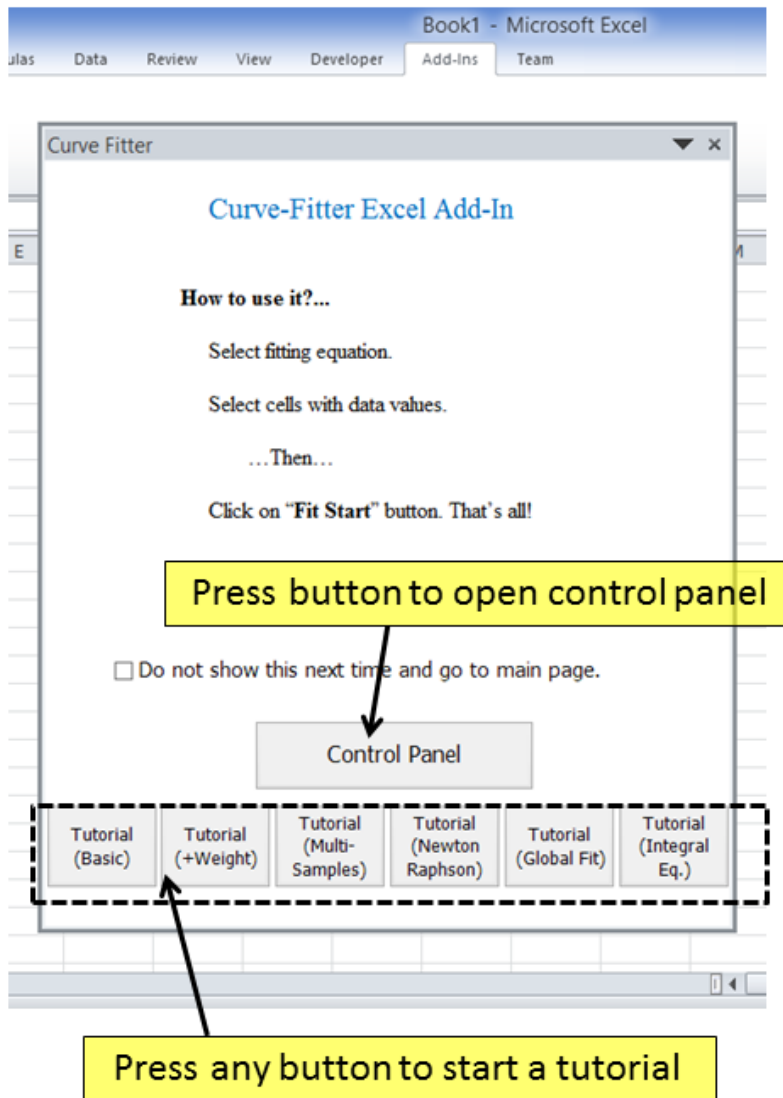
## General Help

After installation Curve Fitter ribbon group appears in “Add-ins” ribbon control.



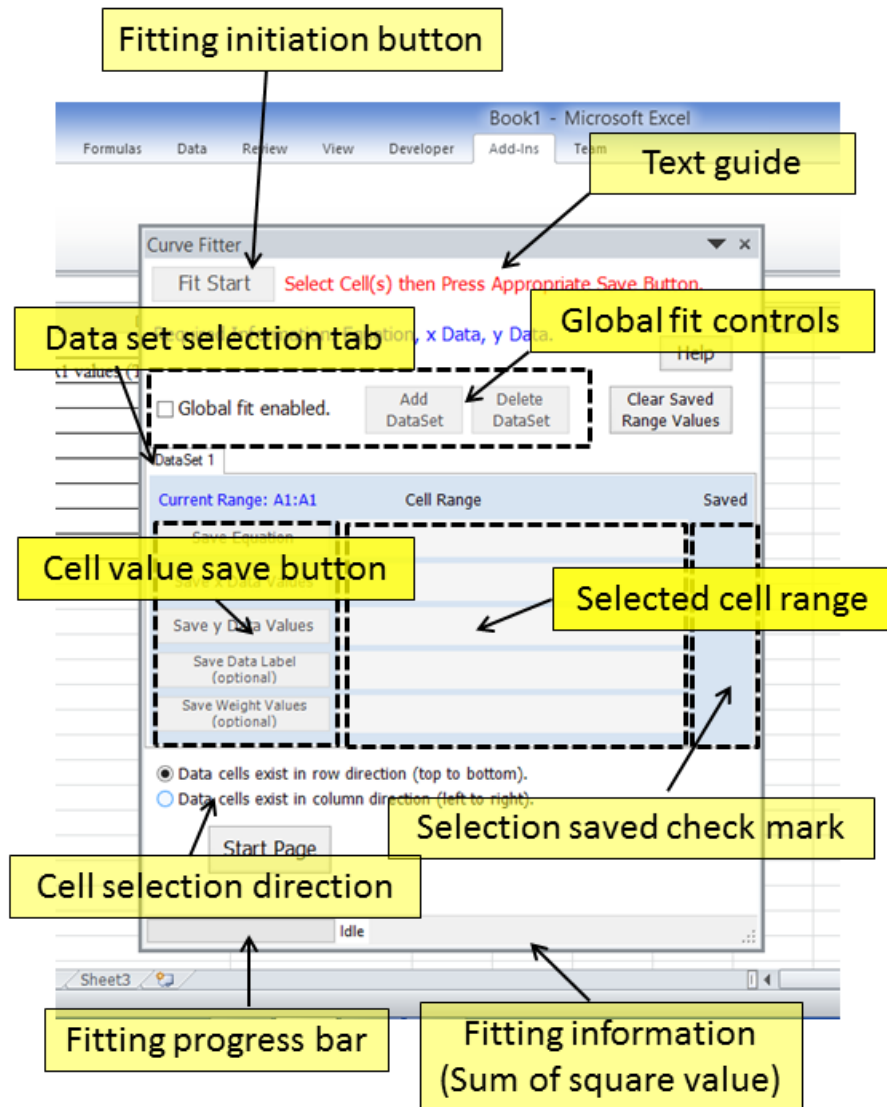
Press “Curve Fitter main Control”.

## Start Screen



\*In the tutorials just follow the text guide (see Control Panel below) to perform curve fitting with example data. (Please try tutorials!)

## Control Panel



When required information ( equation text, x data, y data..minimum) is input, “Fit Start” button will be enabled. Press the button to initiate curve fitting. After fitting the result will be displayed in a new Excel Sheet.

Excel limitations reference

<http://office.microsoft.com/en-us/excel-help/excel-specifications-and-limits-HP005199291.aspx>